

Key vocabulary

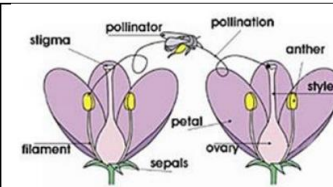
life cycle	this shows how things are born, how they grow and how they reproduce
sexual reproduction	reproduction between two separate male and female plants or animals
asexual reproduction	reproduction with only one parent
sperm	the male reproductive cells
female egg	the female reproductive cell
fertilise	to make able to produce babies, seeds, fruit, or eggs
metamorphosis	a dramatic change that some animals and insects go through during their life cycles
cutting	a root, stem or leaf cut from a plant and used to grow another plant of the same type

Key knowledge

- As part of their **life cycle**, plants and animals **reproduce**.
- Most animals **reproduce sexually**. This involves two parents where the **sperm** from the male **fertilises** the **female egg**.
- Animals including humans have **offspring** which grow into adults.
- In humans and some animals, these **offspring** will be born live, such as babies or kittens, and then grow into adults.
- In other animals, such as chickens or snakes, there may be eggs laid that hatch to young, which then grow to adults.
- Some young undergo a further change before becoming adults e.g. caterpillars to butterflies. This is called a **metamorphosis**.
- Plants reproduce both **sexually** and **asexually**.
- Bulbs, tubers, runners and plantlets are examples of **asexual** plant reproduction.
- Gardeners may force plants to reproduce asexually by taking **cuttings**.
- In plants, sexual reproduction occurs through **pollination**, usually involving wind or insects.

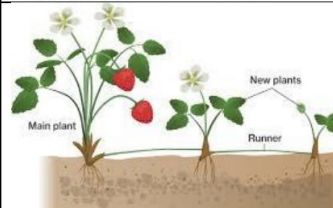
Plant reproduction

Sexual reproduction occurs through pollination usually involving wind or insects.



E.g. lily, apple tree, tomato

Asexual reproduction involves only one parent using bulbs, tubers, runners and cuttings.

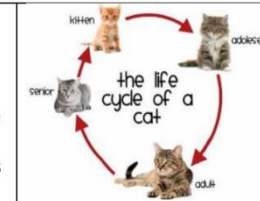


E.g. spider plant, potato, strawberry

Life cycles of animals

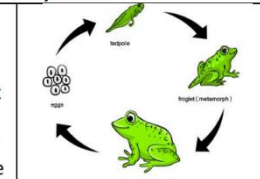
Mammal

- female gives birth to young
- Live young are born
- young looks like adult
- female provides milk for young



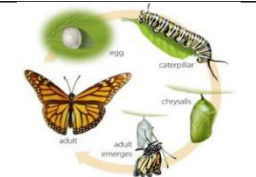
Amphibian

- eggs laid in water
- young go through different form before looking like adult
- no parental care



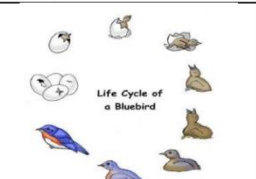
Insect

- egg laid and then hatch
- some grow to adult but most go through metamorphosis to adult



Bird

- eggs laid in a nest
- young hatches from an egg
- grow to adult
- parental care after hatching



We are building our knowledge from

- Animals inc Humans (Year 2)
- Plants (Year 3)